

# Where Motion Matters



Make your machine faster, smarter, safer, and smaller with the motion control technology used by the world's leading OEMs.

**Platinum**  
by **Elmo** 

See why we are different

# Why Elmo

## Innovation delivered

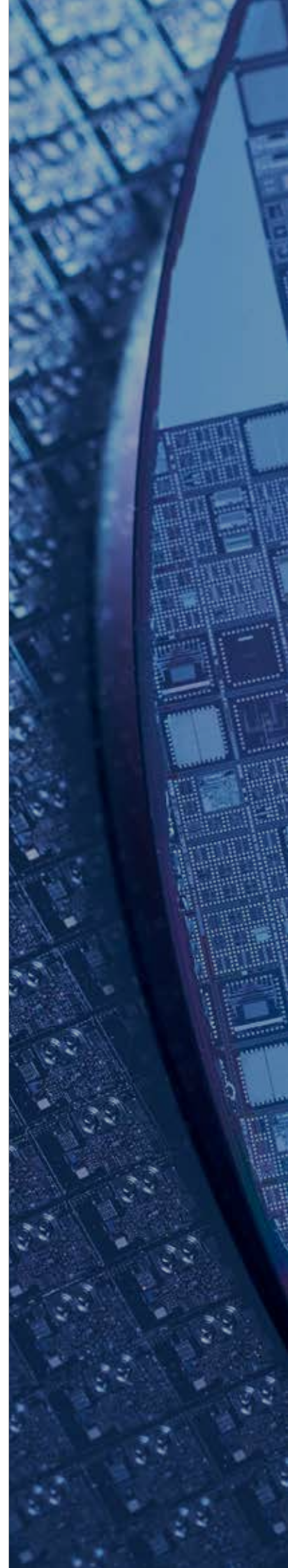
Our drives are in the field every day enabling the most technically demanding and mission critical applications, from semiconductors to space.

## By engineers for engineers

Elmo exists because motion control is our passion. The only thing we're more passionate about is helping you get our drives into production.

## The right drive for every application

With the largest catalog of compact, high performance servo drives and motion controllers, Elmo can drive any motor, with any feedback, on any bus.



# Any Motion. Any Application

Elmo motion control is designed for all types of industries for a wide range of applications including:



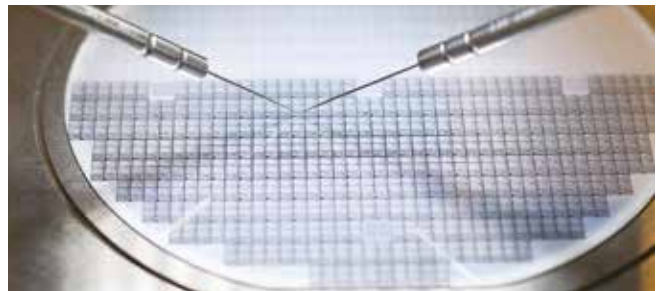
Life Sciences



AGV & Smart Warehouse



Industrial Automation



Semiconductor



Printing & Packaging



Extreme Environments



Robotics



Laser Cutting



Electronics

# Platinum Line | Servo Drives

## Platinum Bell

- > Up to 25A/100V & 9A/200V
- > Up to 2kW of Continuous Power
- > Brushless, Stepper or 2 X Voice-Coil



Platinum Solo Bell



Platinum Bell

## Platinum Quartet

- > 4 X 5000W Servo Drives 4 Axes
- > Motion Controller



Platinum Solo Quartet



Platinum Quartet

## Platinum Whistle

- > Up to 25A/100V & 9A/200V
- > Up to 2kW of Continuous Power



Platinum Solo Whistle



Platinum Solo Whistle with Safe I/O



Platinum Whistle

## Platinum Twitter

- > Up to 80A/80V & 30A/200V
- > Up to 5.6kW of Continuous Power



Platinum Solo Twitter



Platinum Solo Twitter with Safe I/O



Platinum Twitter

## Platinum Bassoon

- > Up to 10A/230VAC
- > Up to 3.25kW of Continuous Power
- > Brushless, DC Brush, Linear Motors or Voice-Coil



## Platinum Solo Triple Twitter

- > Up to 270A/60V, 240A/80V, 210A/100V, 100A/200V
- > Up to 17kW of Continuous Power



## Platinum Harmonica

- > Up to 50A/100V & 35A/200V
- > Up to 2kW of Continuous Power
- > Brushless, Stepper or 2 X Voice-Coil



## Platinum String Quartet

- > 4x 16A/400V Servo Drives
- > Motion Controller



## Platinum Cimbasso

- > Up to 50A/800V
- > Up to 5.6kW of Continuous Power



# Platinum Line I Controller

## Platinum Maestro

- > Up to 256 axes of motion
- > Advanced multi-axis control
- > Motion without programming
- > Enhanced field bus support



Platinum Maestro

# Platinum Line I Software Tools

## EASII (Elmo Application Studio)

- > A software tool that walks you through implementation.
- > Configures programs, maintains, and analyzes every feature and capability in Elmo's servo drives and motion controllers.
- > Designers can easily implement specific motion control needs.



## COMPOSER2®

- > Unique software tool allowing engineers to execute their own designed software.
- > A powerful tool enabling machine designers to easily develop, test and implement their own control algorithms.
- > The composed code is cross-compiled and downloaded directly on the Platinum drives and motion controller for testing and executing in real-time environments.



# Platinum Technology Highlights



ULTRA-LOW  
LATENCY

Perfect machine  
synchronization



Faster  
development



Award winning  
settling times

**4000:1**  
Wide Dynamic Range

Optimally move  
any load

**35X30<sub>MM</sub>**  
Miniture Modules

Mount  
anywhere



Run your own  
algorithms from  
MATLAB

Fast and Soft  
Switching  
Technology



Smaller, more  
powerfull  
machines

**256**  
Axes of Motion

Multi-axis  
capabilities

**Enhanced Servo Performance** > Faster • More responsive • Higher resolutions • Additional algorithms for better control

**Single Drive - Multi-Axis Control** > Drive 2 from a single core, 3 & 4 axes on Platinum Quartet

**Enhanced EtherCAT Networking** > Faster cycling • Full synchronization of EtherCAT to position, velocity and current loop • Negligible jitter • Near-zero latency

**Certified Safety, Functional Safety & FSoE** > EN 61508 • EN 61800 • IEC 61784 up to SIL 3 CAT4 PLe over the network safety • Rich safety I/O • safety software

**Rich Feedback Support** > More feedback support • Up to 3 simultaneously (of which 2 may be absolute) • Safe sensors support • One cable technology

**High Processing Power** > Faster data handling • Larger memory • Enhanced processing • Real-time recorder

**Flexible Control Design** > Implement your own control design • Elmo cloud technology (SIL - Software in-the-loop)

# A Culture of Reliability

+35

Years pioneering motion control innovation

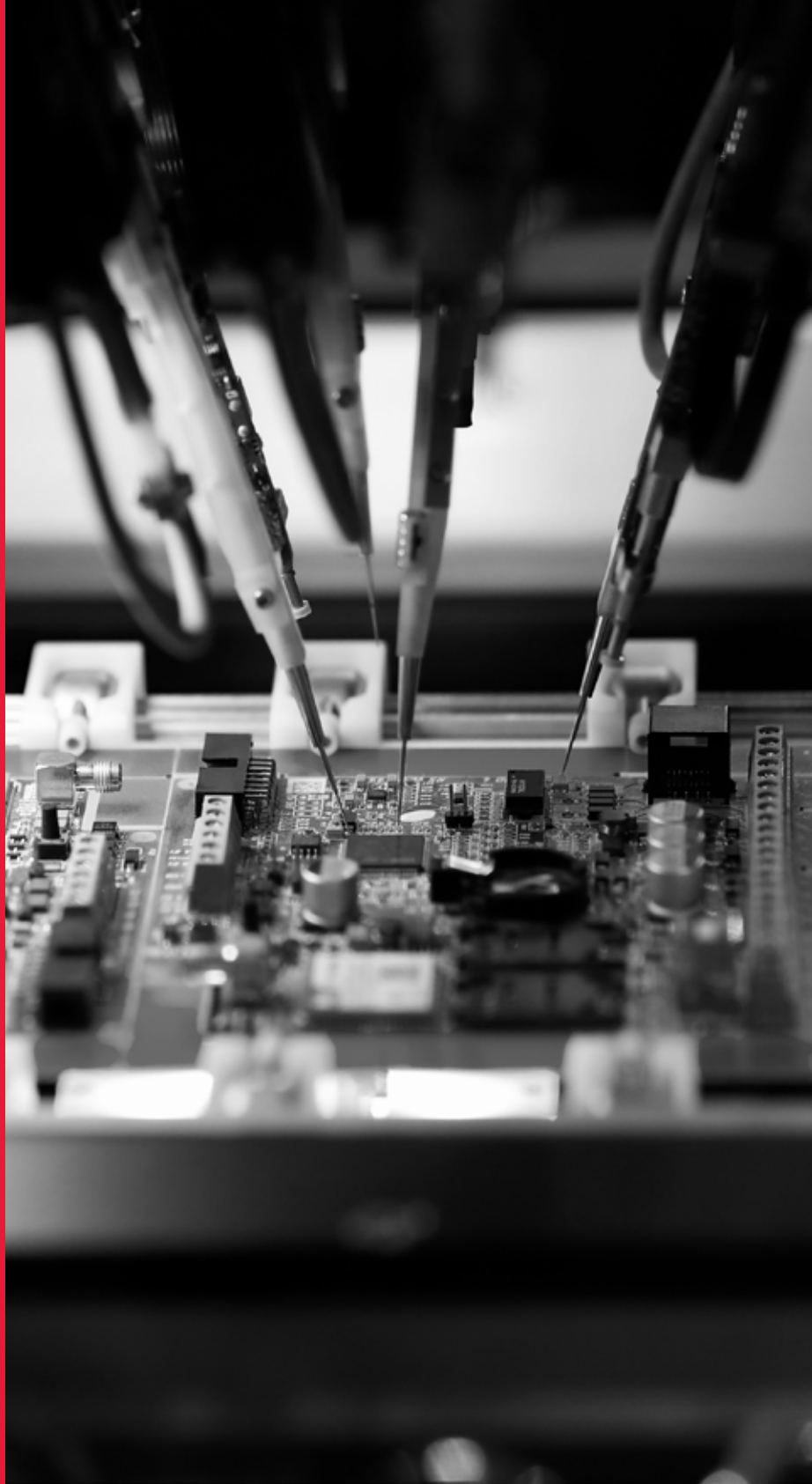
>2500

OEMs trust Elmo for their motion needs

>4.3M

Servo drives running 24/6 worldwide

Learn more at [elmomc.com](http://elmomc.com)



**EtherCAT**  
Conformance tested



Any Motor



Any Feedback

© Copyrights 2025 Elmo Motion Control Company.  
The information contained herein is subjected to change without notice. Published on  
September 2024. | [www.elmomc.com](http://www.elmomc.com)

**Elmo**  
Motion Control